

(Published in the Rose Hill Reporter April 14, 2022)

ORDINANCE NO. 697

**AN ORDINANCE AMENDING THE ZONING REGULATIONS OF THE CITY OF ROSE HILL, KANSAS, AS ORIGINALLY ADOPTED BY ORDINANCE NO. 661, AND INCORPORATING AS A PART THEREOF AN AMENDMENT TO THE OFFICIAL ZONING MAP.**

**WHEREAS**, ON May 18, 2017, the City of Rose Hill, Kansas enacted Ordinance No. 661, which Ordinance was duly published and provided for the adoption and of incorporation therein certain Zoning Regulations for said City, official copies of the same being of file with the City Clerk; and

**WHEREAS**, the Planning Commission of the City of Rose Hill, Kansas has prior and hereto and after giving due notice, opened a public hearing on March 8, 2022, and made recommendations for an amendment as contained herein; and

**WHEREAS**, the Governing Body of the City of Rose Hill, Kansas, desires to approve such amendment of the Zoning Regulations Official Map in accordance therein.

**BE IT ORDANINED BY THE GOVERNING BODY OF THE CITY OF ROSE HILL, KANSAS:**

Section 1. **Official Maps:** There is further herein incorporated by reference and adopted an Official Map delineating the boundaries of zoning districts and the classification of such districts, which Map is marked "Official Copy of the City of Rose Hill, Kansas, Zoning Map 2022" and filed with the City Clerk to be opened for inspection and available to the public at all reasonable business hours.

Section 2. Any provisions of this Ordinance that shall be declared to be unconstitutional or otherwise invalid shall not affect the validity and authority of the other sections of this ordinance.

Section 3. All other ordinances or parts of ordinances in conflict with this Ordinance are hereby repealed.

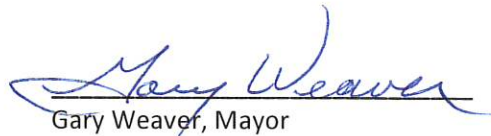
Section 4. This Ordinance shall take effect and be in force from and after its passage, approval, and publication once in the official city newspaper.

Passed by the Governing Body of the City on this 4th day of April, 2022.

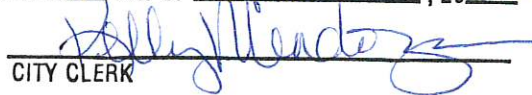
ATTEST:

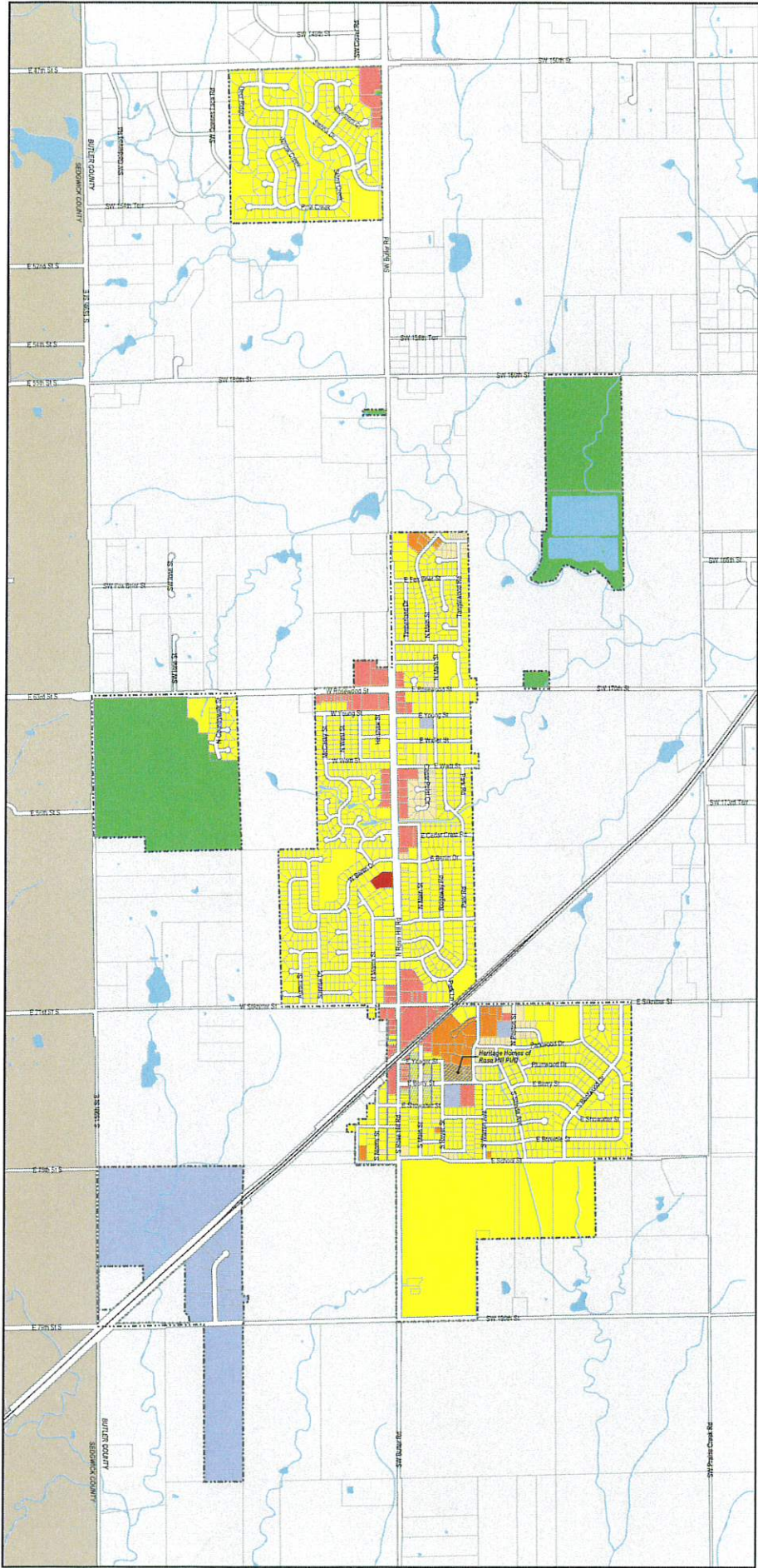
  
Kelly Mendoza, City Clerk



  
Gary Weaver, Mayor

I HEREBY CERTIFY THAT THE FOREGOING IS A TRUE AND CORRECT COPY OF THE ORIGINAL ORDINANCE; THAT SAID ORDINANCE WAS PASSED ON THE 4th DAY OF April, 2022; THAT THE RECORD OF THE FINAL VOTE ON ITS PASSAGE IS FOUND ON PAGE 3 OF THE MINUTES; THAT IT WAS PUBLISHED IN THE Rose Hill Reporter ON THE 4th DAY OF April, 2022

  
CITY CLERK



OFFICIAL COPY OF THE  
CITY OF ROSE HILL, KANSAS,  
ZONING MAP 2022

Updated by Ordinance 697  
April 4, 2022



OFFICIAL  
ZONING MAP

Official copy of zoning district map incorporated into zoning regulations by adoption of an ordinance by the Governing Body of the City on the 15th day of May, 2017.

City of Rose Hill, Kansas  
Ordinance Number 581  
Adopted: May 15, 2017  
Effective: May 18, 2017  
Signed: Roger Perry, Mayor  
Attest: Kelly Mendez, City Clerk

Map Legend

- Zoning Districts**
- Agricultural District A-1
  - Single-Family Residential District R-1
  - Single-Family/Zero Lot Lene Residential District R-2
  - Multi-Family Residential District R-3
  - Local Business District B-1
  - General Commercial District C-1
  - Industrial District I-1
  - PUD or PDO
  - Planned Development Overlay District
- Base Map**
- Rose Hill City Limit Boundaries
  - Sedgewick/Butler County Boundary Line
  - Unincorporated Butler County
  - Unincorporated Sedgewick County
  - Right-of-Way Boundary Lines
  - BNSF Railway
  - Railroad Tracks
  - Pond or Storm Drainage Retention
  - Stream or Storm Drainage Channel/Ditch



**Map Data Sources**  
Parcel Lines - Butler County GIS (02/06/2020)  
& supplemented with Heritage Addition Final Plat  
City Limits - Butler County GIS (02/06/2020)  
Butler County GIS  
Sedgewick County Geographic Information Services  
Kansas GIS Data Access & Support Center

**Map Coordinate System**  
State Plane - Kansas South - FIPS 1502  
NAD 1983 (2011)

**Zoning Information**  
Professional Engineering Consultants, P.A.

**Map Revision Dates**  
Revision 1 05/04/2020  
Revision 2 05/18/2020  
Revision 3 03/08/2022 (Ordinance Nos 592, 587 and 585)  
Revision 4  
Revision 5